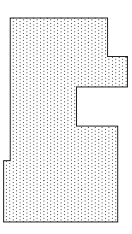


FIRST FLOOR PLAN
SCALE: 1" = 20'-0"



KEY PLAN
N/S



Architecture
Interiors
Planning

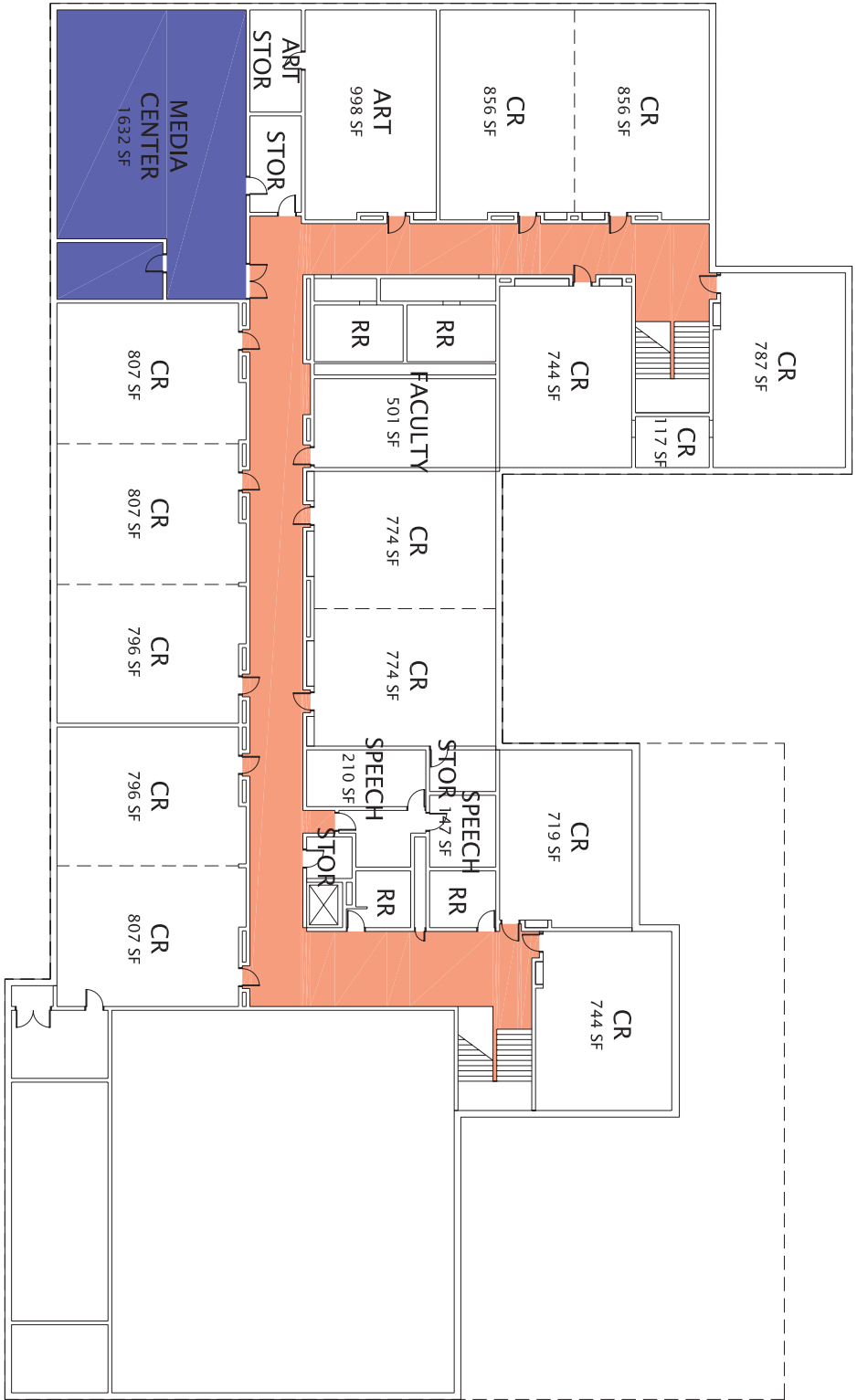
830 N. SILVER STREET
TOLLEDO, OHIO 43604
419.243.2400 P1 419.243.2405 F

- ORIGINAL CONSTRUCTION
- CORRIDORS
- GYMNASIUM
- KITCHEN
- MEDIA CENTER

DEWITT ELEMENTARY SCHOOL

CUYAHOGA FALLS LOCAL SCHOOLS
OHIO SCHOOLS FACILITY COMMISSION

ASSESSMENT DATE: JULY 2009	CONSTRUCTION DATES: 1968
GRADE CONFIGURATION: K-5	EXISTING BUILDING AREA: 50,520 SF
CURRENT ENROLLMENT: 517	SQUARE FOOTAGE PER STUDENT: 97.72
ACREAGE: 3.83	

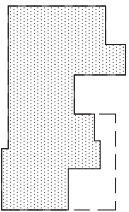


SECOND FLOOR PLAN

SCALE: 1" = 20'-0"



KEY PLAN



THOMAS PORTER ARCHITECTS
 Architecture
 Interiors
 Planning

830 N. SIMPSON STREET
 TOLEDO, OHIO 43604
 419.243.2400 P 419.243.2405 F

- ORIGINAL CONSTRUCTION
- 1968 AREA: 50,520 SF
- CORRIDORS
- GYMNASIUM
- KITCHEN
- MEDIA CENTER

DEWITT ELEMENTARY SCHOOL

CUYAHOGA FALLS LOCAL SCHOOLS
 OHIO SCHOOLS FACILITY COMMISSION

ASSESSMENT DATE: JULY 2009	CONSTRUCTION DATES: 1968
GRADE CONFIGURATION: K-5	
CURRENT ENROLLMENT: 517	EXISTING BUILDING AREA: 50,520 SF
ACREAGE: 3.83	SQUARE FOOTAGE PER STUDENT: 97.72