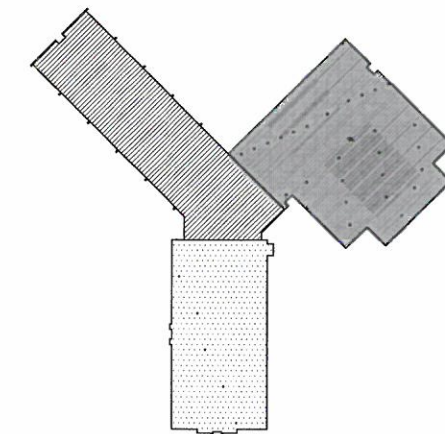




FIRST FLOOR PLAN
SCALE: 1" = 40'-0"



KEY PLAN
NTS

THOMAS
PORTER
ARCHITECTS



Architecture
Interiors
Planning

830 N. SUMMIT STREET
TOLEDO, OHIO 43604

419.243.2400 P | 419.243.2405 F

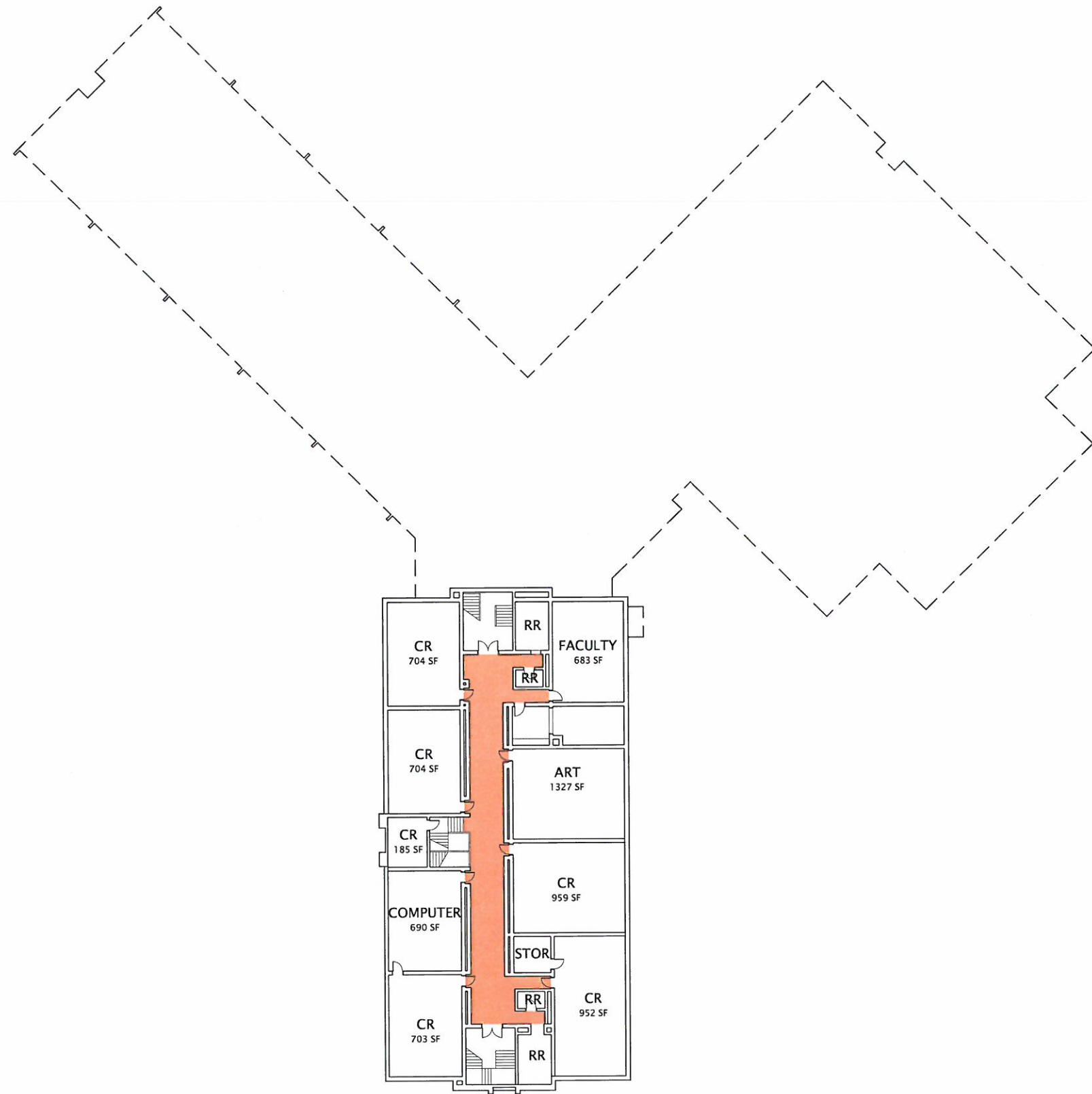
- ORIGINAL CONSTRUCTION
1930 AREA: 33,454 SF
- CLASSROOM ADDITION
1957 AREA: 13,021 SF
- CLASSROOM ADDITION
1959 AREA: 15,728 SF
- CORRIDORS
- GYMNASIUM
- KITCHEN
- MEDIA CENTER

LINCOLN ELEMENTARY SCHOOL
CUYAHOGA FALLS LOCAL SCHOOLS
OHIO SCHOOLS FACILITY COMMISSION

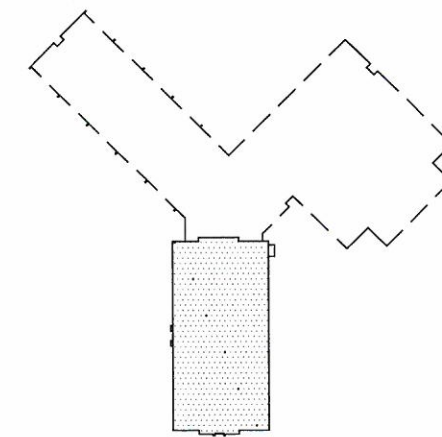
ASSESSMENT DATE: JULY 2009	CONSTRUCTION DATES: 1930, 1957, 1959
GRADE CONFIGURATION: K-5	EXISTING BUILDING AREA: 62,203 SF
CURRENT ENROLLMENT: 476	SQUARE FOOTAGE PER STUDENT: 130.68
ACREAGE: 10.5	

SHEET NUMBER

3 OF 5



SECOND FLOOR PLAN
SCALE: 1" = 40'-0"



KEY PLAN
NTS

830 N. SUMMIT STREET
TOLEDO, OHIO 43604

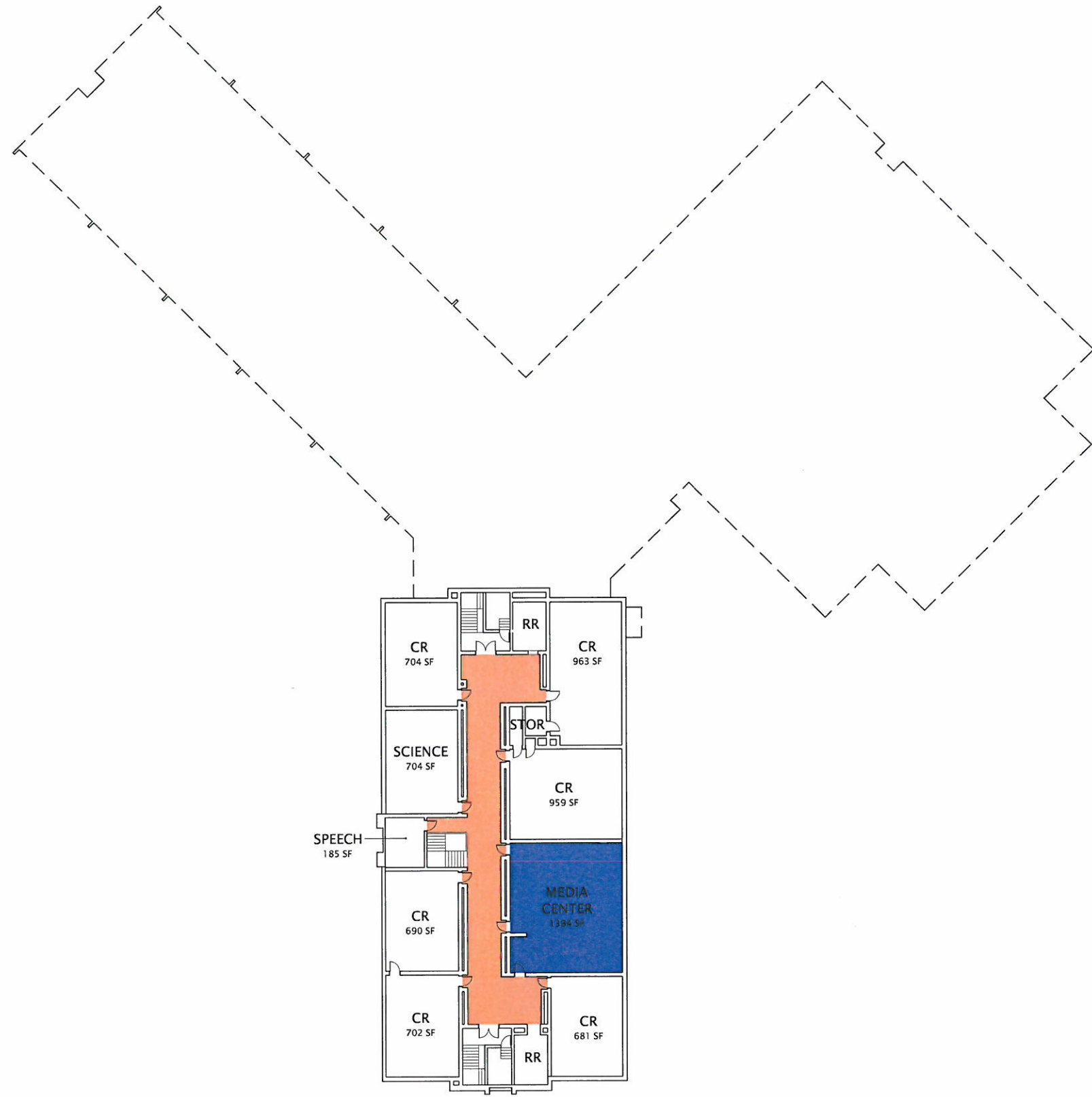
419.243.2400 P | 419.243.2405 F

- ORIGINAL CONSTRUCTION
1930 AREA: 33,454 SF
- CLASSROOM ADDITION
1957 AREA: 13,021 SF
- CLASSROOM ADDITION
1959 AREA: 15,728 SF
- CORRIDORS
- GYMNASIUM
- KITCHEN
- MEDIA CENTER

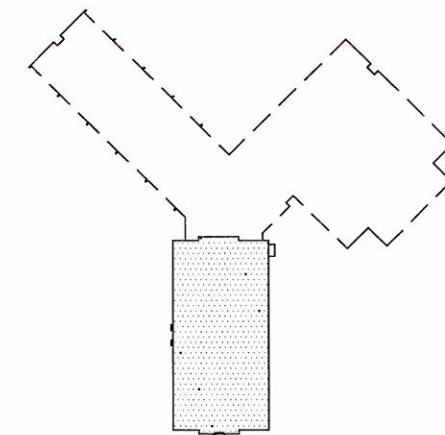
LINCOLN ELEMENTARY SCHOOL CUYAHOGA FALLS LOCAL SCHOOLS OHIO SCHOOLS FACILITY COMMISSION	CONSTRUCTION DATES: 1930, 1957, 1959
	ASSESSMENT DATE: JULY 2009
GRADE CONFIGURATION: K-5	EXISTING BUILDING AREA: 62,203 SF
CURRENT ENROLLMENT: 476	SQUARE FOOTAGE PER STUDENT: 130.68
ACREAGE: 10.5	

SHEET NUMBER

4 OF 5



THIRD FLOOR PLAN
SCALE: 1" = 40'-0"



KEY PLAN
NTS

830 N. SUMMIT STREET
TOLEDO, OHIO 43604

419.243.2400 P | 419.243.2405 F

- ORIGINAL CONSTRUCTION
1930 AREA: 33,454 SF
- CLASSROOM ADDITION
1957 AREA: 13,021 SF
- CLASSROOM ADDITION
1959 AREA: 15,728 SF
- CORRIDORS
- GYMNASIUM
- KITCHEN
- MEDIA CENTER

LINCOLN ELEMENTARY SCHOOL CUYAHOGA FALLS LOCAL SCHOOLS OHIO SCHOOLS FACILITY COMMISSION	CONSTRUCTION DATES: 1930, 1957, 1959
	ASSESSMENT DATE: JULY 2009
	GRADE CONFIGURATION: K-5
	CURRENT ENROLLMENT: 476
ACREAGE: 10.5	EXISTING BUILDING AREA: 62,203 SF
	SQUARE FOOTAGE PER STUDENT: 130.68

SHEET NUMBER

5 OF 5