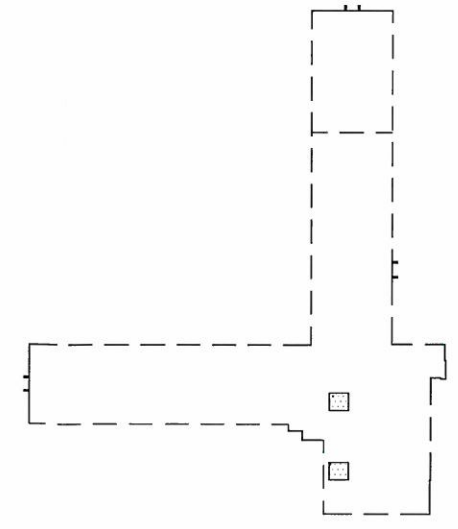


**MECHANICAL MEZZANINE PLAN**

SCALE: 1" = 40'-0"



**KEY PLAN**

NTS

THOMAS  
PORTER  
ARCHITECTS

Architecture  
Interiors  
Planning

830 N. SUMMIT STREET  
TOLEDO, OHIO 43604  
419.243.2400 P | 419.243.2405 F

- ORIGINAL CONSTRUCTION  
1956 AREA: 36,766 SF
- CLASSROOM ADDITION  
1957 AREA: 6,008 SF
- CORRIDORS
- GYMNASIUM
- KITCHEN
- MEDIA CENTER

**NEWBERRY ELEMENTARY SCHOOL**  
CUYAHOGA FALLS LOCAL SCHOOLS  
**OHIO SCHOOLS FACILITY COMMISSION**

ASSESSMENT DATE: JULY 2009	CONSTRUCTION DATES: 1956 & 1957
GRADE CONFIGURATION: PK-8	EXISTING BUILDING AREA: 42,774 SF
CURRENT ENROLLMENT: 144	SQUARE FOOTAGE PER STUDENT: 297.04
ACREAGE: 10	

SHEET NUMBER

**4 OF 4**