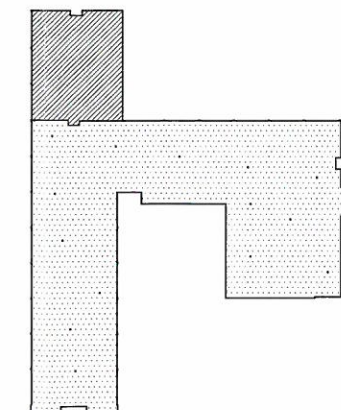




FIRST FLOOR PLAN  
SCALE: 1" = 40'-0"



KEY PLAN  
NTS

830 N. SUMMIT STREET  
TOLEDO, OHIO 43604

419.243.2400 P | 419.243.2405 F

- ORIGINAL CONSTRUCTION  
1958 AREA: 33,419 SF
- CLASSROOM ADDITION  
1963 AREA: 6,159 SF
- CORRIDORS
- GYMNASIUM
- KITCHEN
- MEDIA CENTER

**PRESTON ELEMENTARY SCHOOL**  
CUYAHOGA FALLS LOCAL SCHOOLS  
OHIO SCHOOLS FACILITY COMMISSION

ASSESSMENT DATE: JULY 2009	CONSTRUCTION DATES: 1958 & 1963
GRADE CONFIGURATION: K-5	EXISTING BUILDING AREA: 39,578 SF
CURRENT ENROLLMENT: 285	SQUARE FOOTAGE PER STUDENT: 138.87
ACREAGE: 13.5	