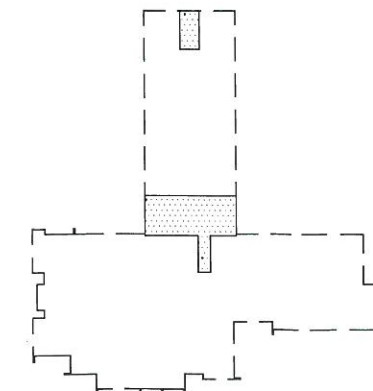


BASEMENT PLAN
SCALE: 1" = 40'-0"



KEY PLAN
NTS

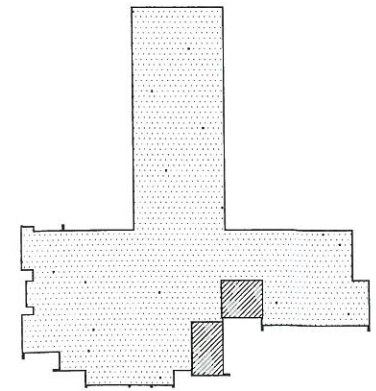
	ORIGINAL CONSTRUCTION 1961 AREA: 38,781 SF
	BOARD OFFICES 1961 AREA: 1,943 SF
	CORRIDORS
	GYMNASIUM
	KITCHEN
	MEDIA CENTER

SCHNEE LEARNING CENTER CUYAHOGA FALLS LOCAL SCHOOLS OHIO SCHOOLS FACILITY COMMISSION	CONSTRUCTION DATES: 1961 & 1961
	EXISTING BUILDING AREA: 40,724 SF SQUARE FOOTAGE PER STUDENT: 407.24
ASSESSMENT DATE: JULY 2009	GRADE CONFIGURATION: 7-12
CURRENT ENROLLMENT: 100	ACREAGE: 5

	ORIGINAL CONSTRUCTION 1961 AREA: 38,781 SF
	BOARD OFFICES 1961 AREA: 1,943 SF
	CORRIDORS
	GYMNASIUM
	KITCHEN
	MEDIA CENTER

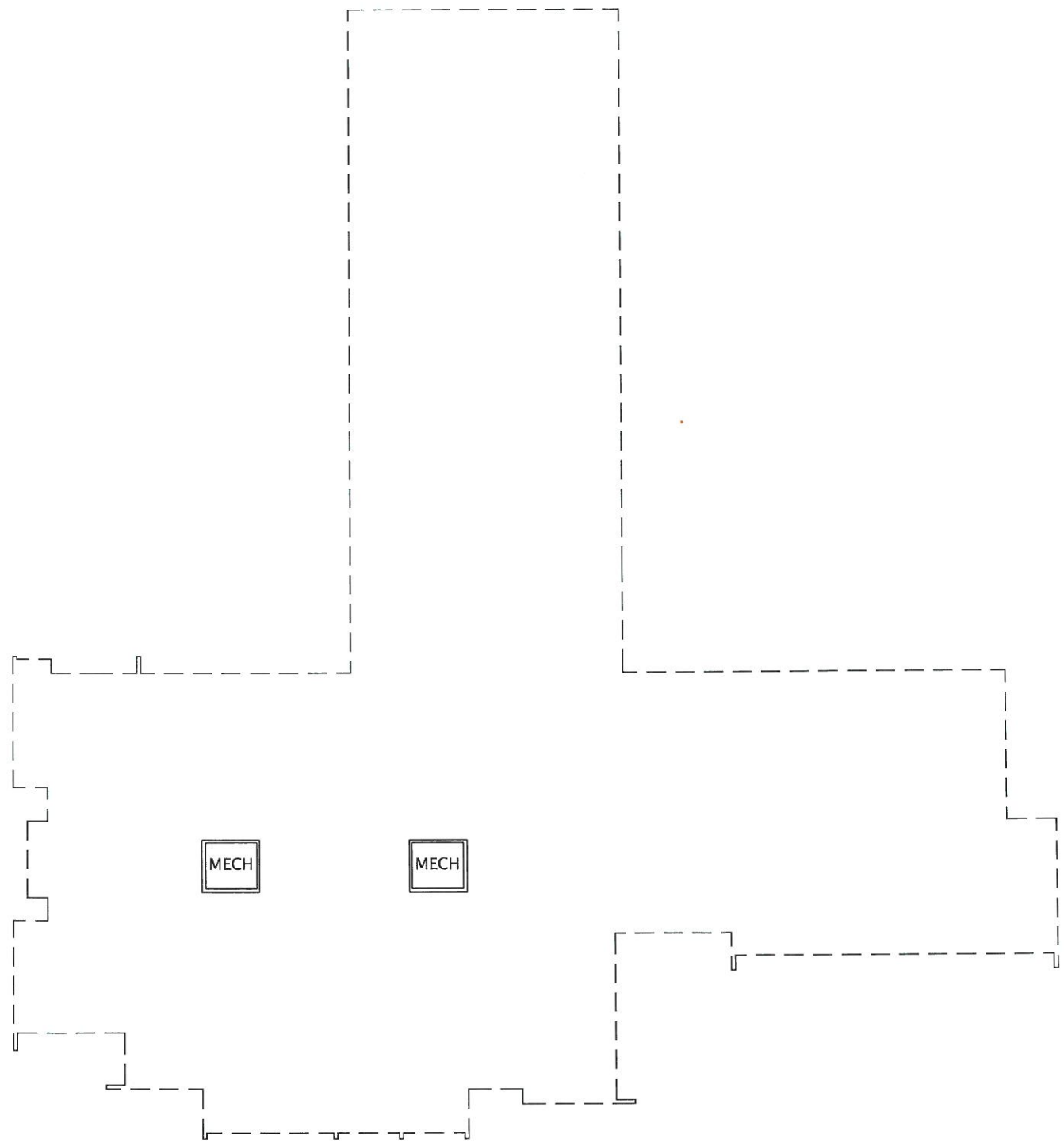


FIRST FLOOR PLAN
SCALE: 1" = 40'-0"

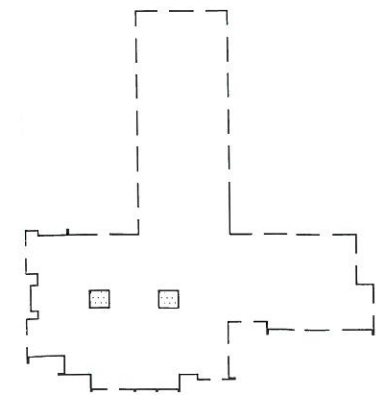


KEY PLAN
NTS

SCHNEE LEARNING CENTER CUYAHOGA FALLS LOCAL SCHOOLS OHIO SCHOOLS FACILITY COMMISSION	CONSTRUCTION DATES: 1961 & 1961
	ASSESSMENT DATE: JULY 2009
EXISTING BUILDING AREA: 40,724 SF	GRADE CONFIGURATION: 7-12
SQUARE FOOTAGE PER STUDENT: 407.24	CURRENT ENROLLMENT: 100
	ACREAGE: 5



MEZZANINE PLAN
SCALE: 1" = 40'-0"



KEY PLAN
NTS

- ORIGINAL CONSTRUCTION
1961 AREA: 38,781 SF
- BOARD OFFICES
1961 AREA: 1,943 SF
- CORRIDORS
- GYMNASIUM
- KITCHEN
- MEDIA CENTER

SCHNEE LEARNING CENTER
CUYAHOGA FALLS LOCAL SCHOOLS
OHIO SCHOOLS FACILITY COMMISSION

ASSESSMENT DATE: JULY 2009	CONSTRUCTION DATES: 1961 & 1961
GRADE CONFIGURATION: 7-12	EXISTING BUILDING AREA: 40,724 SF
CURRENT ENROLLMENT: 100	SQUARE FOOTAGE PER STUDENT: 407.24
ACREAGE: 5	